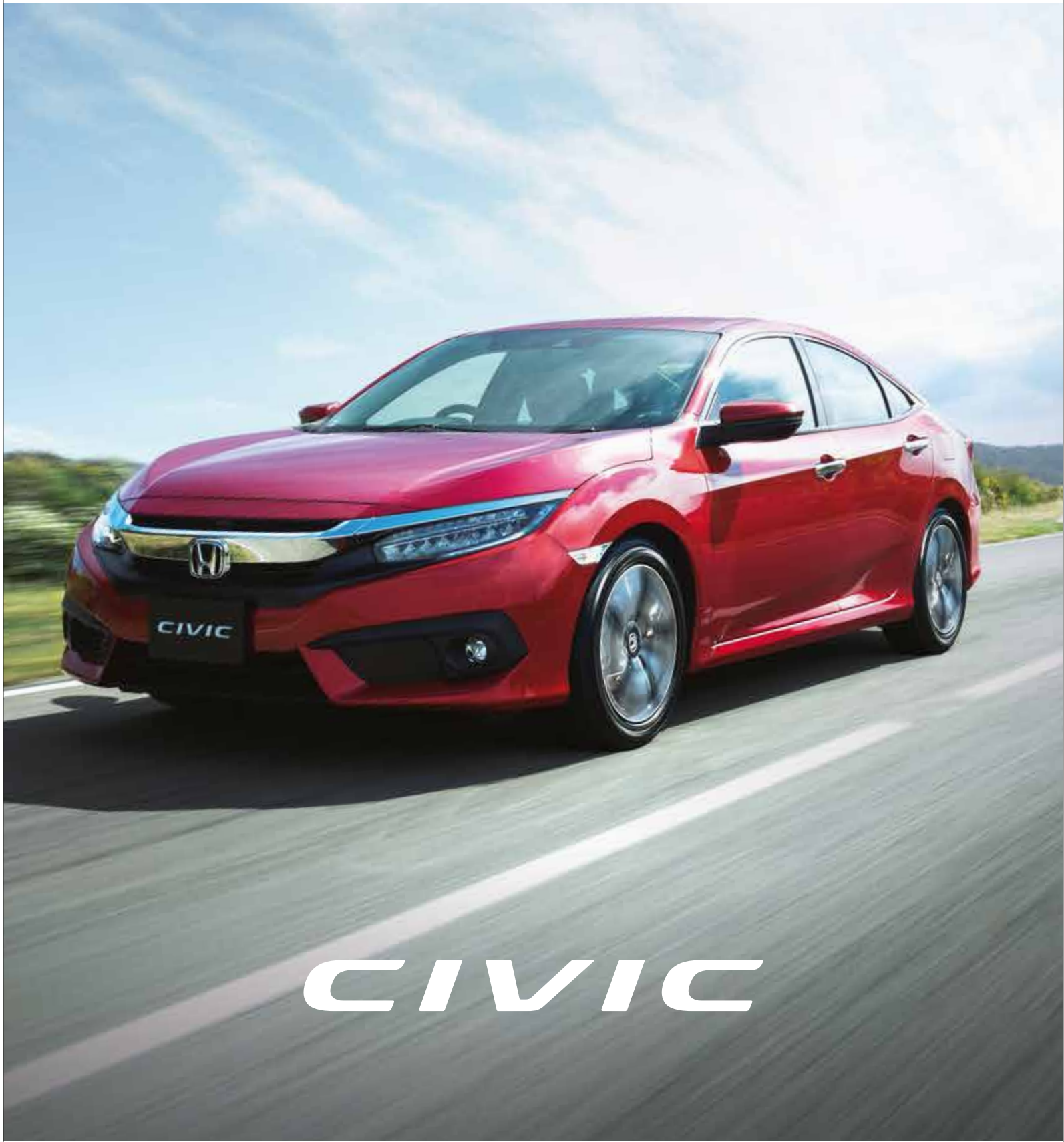



**HONDA**  
The Power of Dreams



Honda Motor Co., Ltd. reserves the right to change or modify equipment or specifications at any time without prior notice. Details, colors, descriptions and illustrations are for information purposes only. As specifications or equipment may vary in some countries, please check with at your nearby Honda dealer.

KY-GHA-19YM-0419

[www.honda-mideast.com](http://www.honda-mideast.com)

	
<p><i>SIMPLY STUNNING</i></p> <p>Forty years from the introduction of the first Honda Civic, the 2019 Civic sets a new standard in compact car style and performance.</p> <p><small>Specifications vary according to country. Please consult your local dealer for details.</small></p>	<p>With sleek, sporty lines and an improved power-to-weight ratio, it's a driver's delight. Your passengers will love it, too, because the spacious cabin is loaded with premium features for class-above comfort and convenience. The 2019 Civic — it's quite simply stunning.</p>





Styled for sophistication.

Long and low, the new Civic leaps into the future. With a wide, confident stance for superior road-grip and handling, and 17-inch alloy wheels\* and low-profile tires for premium sports styling.

\*VTI grade only



POWER SIDE MIRRORS

Color-coordinated side mirrors feature power adjustment, with integrated LED turn signals on all models.



FOG LIGHTS

With their wide, low beam, fog lights enhance visibility when driving in dust storms or heavy fog.



SIGNATURE LED HEADLIGHTS

RS models feature signature inline LED headlights, and all models are equipped with LED Daytime Running Lights (DRL) to alert other drivers to your presence. Long-lasting LED lamps are also used for taillights, brake lights, the license-plate light and the center high-mounted stop light.

Specifications vary according to country. Please consult your local dealer for details.





## Dressed to command attention.

The new Civic is muscular and athletic, poised for action even when standing still. Its sharp good looks command attention coming and going, with premium-class quality evident in every detail of the car's finish and trim.



### CAPLESS FUEL SYSTEM

The fuel filler neck opens on contact with the pump nozzle, so refilling the tank is always clean and simple.

Specifications vary according to country. Please consult your local dealer for details.



### DISTINCTIVE C-SHAPED TAIL LIGHTS

Unique taillights feature integrated LED light bars for high visibility, and are a signature element of Civic's bold new look.





A first-class cabin of your own.

Controls and instrumentation are top-flight, designed for easy operation and distraction-free driving. With USB connectivity and steering wheel-mounted controls for Bluetooth® HandsFreeLink® calls and streaming audio, the cabin is first-class all the way.



ENGINE START/STOP BUTTON

You can leave the Smart Entry remote in your pocket or bag — Civic lets you start and stop the engine with pushbutton ease.



DRIVER INFORMATION INTERFACE

A color screen directly in front of the driver displays essential gauges and instruments, as well as information about what's playing and who's calling.



7-INCH TOUCH-SCREEN DISPLAY AUDIO

The high-quality sound system is equipped with USB input and a 7-inch touch-screen for gesture-based control of music, podcasts, and other audio content.

Specifications vary according to country. Please consult your local dealer for details.





### Welcome to inner space.

Inside, the new Civic boasts the most spacious cabin in its class, with dual-zone automatic climate control and premium-grade features throughout.



### REMOTE ENGINE START

Start the engine from a distance to pre-cool your Civic before you even get in.



### ELECTRIC PARKING BRAKE

Civic's new electric parking brake — the first in its class — replaces the conventional hand lever with a compact, easy-to-operate switch. In addition, a convenient new Automatic Brake Hold function eliminates the need to keep your foot on the brake when stopped on a hill or at an intersection.

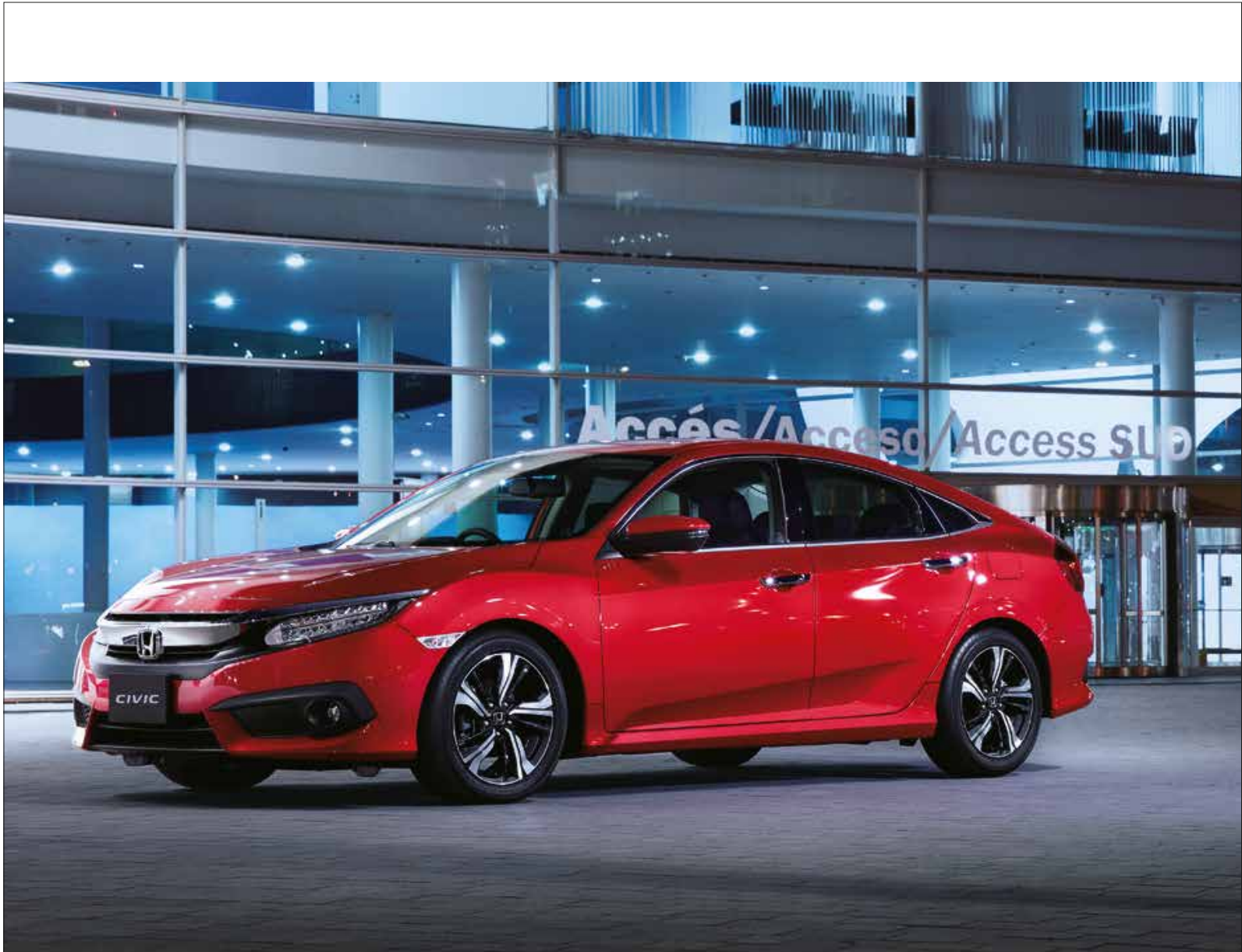


### SMART ENTRY DOORS & TRUNK

Smart Entry lets you lock or unlock the doors and trunk with just a light touch of your hand. It can also be set to automatically lock the doors whenever you stop the engine and walk away from the car.

Specifications vary according to country. Please consult your local dealer for details.





### CONTINUOUSLY VARIABLE TRANSMISSION (CVT)

Civic's new CVT has a taller final gear ratio for fuel-efficient low-rpm cruising, and new-generation G-Design shift logic for smooth acceleration and natural throttle response.



Specifications vary according to country. Please consult your local dealer for details.

### Performance to make you proud.

With a powerful and fuel-efficient engine, and a new-generation continuously variable transmission (CVT) for quick, responsive acceleration and smooth, low-rpm cruising, the new Civic delivers performance that lives up to its stunning looks.



### NEW 2.0-LITER, DOHC INLINE-4 ENGINE

- Refined new engine technology
- 155 horsepower at 6500 rpm
- 187N-m torque at 4200 rpm
- i-VTEC® (Intelligent Variable Valve Timing and Lift Electronic Control) with dual VTC (Variable Valve Timing Control)







Precise,  
responsive handling.

The new Civic features the most sophisticated chassis and suspension design in the model's history. It has MacPherson struts in front and a multi-link suspension in the rear, front and rear stabilizer bars, and fluid-filled front suspension bushings. The result is quicker and more accurate steering, more responsive handling, and class-above ride quality.

SUPERIOR BRAKING  
& ROAD CONTROL

Power-assisted 4-wheel disc brakes feature an Anti-lock Braking System (ABS) with Electronic Brake Distribution (EBD) and Brake Assist for sure stopping power. In addition, Civic now offers Vehicle Stability Assist (VSA) with Traction Control to help enhance stability when accelerating, braking, and cornering, and Agile Handling Assist to help improve initial turning response and reduce understeer.



Specifications vary according to country. Please consult your local dealer for details.





Keeping an eye on safety.



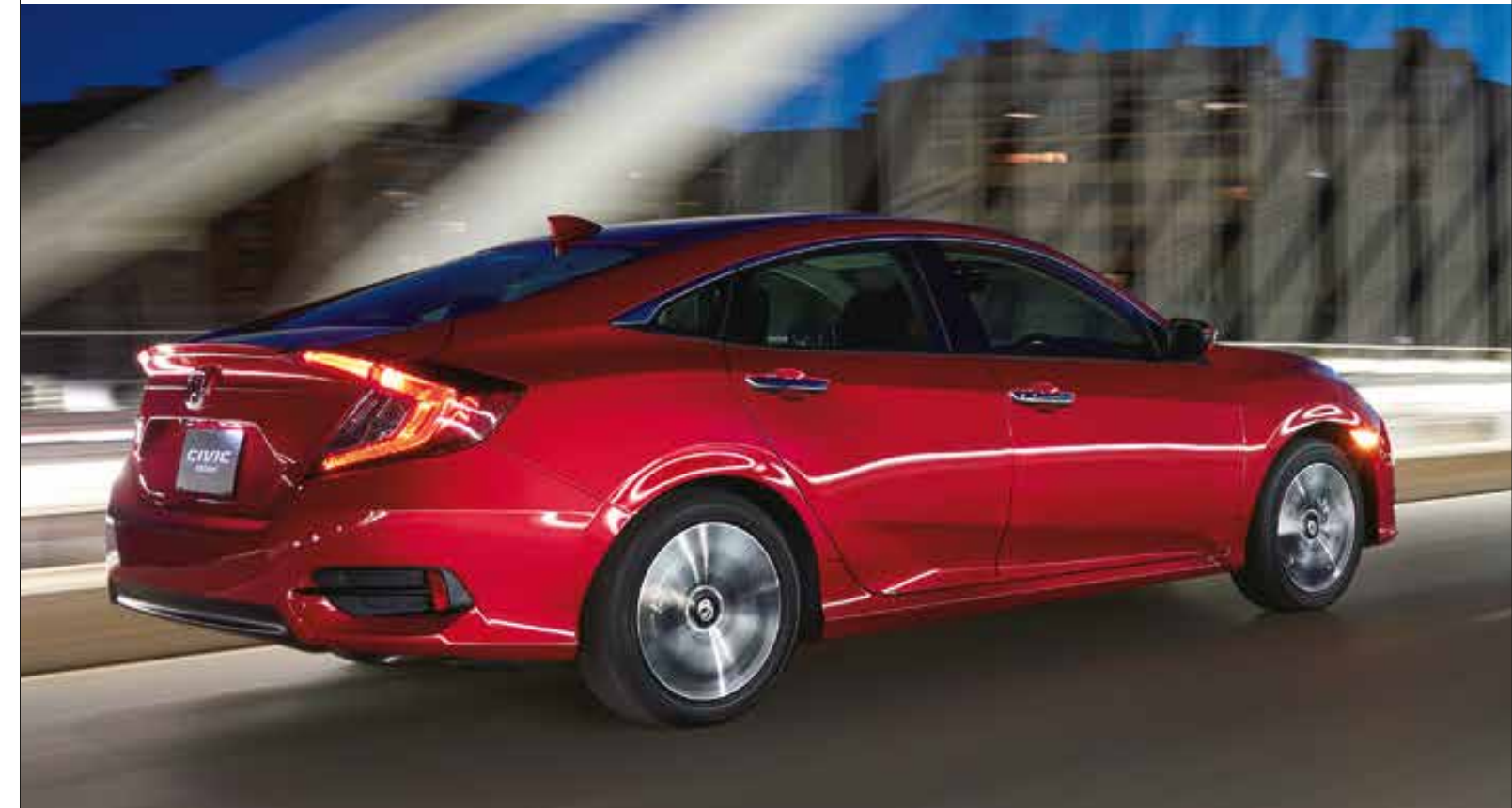
#### WIDE VIEW REAR CAMERA

Get a better look at what's behind you with the Wide View rear camera. On-screen guidelines make it easier to align the vehicle correctly when parking.



#### Honda LANEWATCH™

Switch on the right turn indicator and the 7-inch touch-screen shows live video from a camera mounted in the passenger-side door mirror, revealing nearly four times more area than the mirror alone.



Specifications vary according to country. Please consult your local dealer for details.



	
<p>Protecting you and your passengers.</p> <p><b>NEXT-GENERATION ACE™ BODY STRUCTURE</b></p> <p>Advanced Compatibility Engineering™ body structure with new crash-stroke design helps enhance occupant protection and cabin integrity by distributing frontal impact energy more evenly throughout the vehicle.</p> <p><small>Specifications vary according to country. Please consult your local dealer for details.</small></p>	





Accessories

Front Under Spoiler

Interior Accessories



Ambient Light



All Season Floor Mat



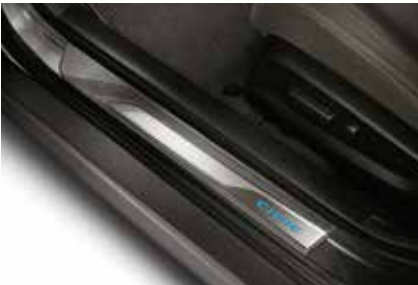
Illuminated Central Console



Cargo Hooks



Cargo Net



Illuminated Side Sill

Exterior Accessories



Deck Lid Spoiler



Side Under Spoiler



Rear Under Spoiler



Front Under Spoiler



Door Visor



Body Side Molding

Specifications vary according to country. Please consult your local dealer for details.



Specifications

Honda Civic 2019 Specifications	LXI	VTI
Engine		
Engine Type	4 Cylinder	4 Cylinder
Displacement (cc)	1996	1996
Valve Train	16-Valve DOHC i-VTEC	16-Valve DOHC i-VTEC
Fuel Injection	Mutli - Point	Multi - Point
Bore x Stroke (mm)	86.0 x 85.9	86.0 x 85.9
Compression ratio	10.8	10.8
Fuel	Unleaded(91)	Unleaded(91)
Transmission		
Transmission Type	CVT	CVT
Drive Type	Front Wheel Drive	Front Wheel Drive
Performance		
Maximum Power (hp @ rpm)	155@6500	155@6500
Maximum Torque (N-m @ rpm)	187@4200	187@4200
Fuel Consumption (Km / L)	18.8	18.8
Fuel Tank Capacity (L)	46.9	46.9
Brake System		
Brake Type Front	Ventilated-Disc	Ventilated-Disc
Brake Type Rear	Disc	Disc
Suspension system		
Suspension Type (Front)	MacPherson Strut	MacPherson Strut
Suspension Type (Rear)	Multi-Link	Multi-Link
Tires / Wheels		
Tire Size - Front	215/55R16 93H	215/50R17 91V
Tire Size - Rear	215/55R16 93H	215/50R17 91V
Wheel Size (inch)	16 inch	17 inch
Capacity		
Seating Capacity	5	5
Weight		
Curb Weight (kg)	1273	1298
Exterior Dimensions		
Overall Length (mm)	4640.5	4640.5
Overall Width (mm)	1799	1799
Overall Width - Including Door Mirrors (mm)	2075	2086
Overall Height (mm)	1432	1432
Wheelbase (mm)	2700	2700
Ground Clearance (mm)	142	142

Grade

Exterior Color

Interior Color

VTI



- Platinum White Pearl
- Lunar Silver Metallic
- Modern Steel Metallic
- Crystal Black Pearl

- Ivory
- Black

LXI



- Carnelian Red Pearl
- Passion Red Pearl
- Brilliant Sporty Blue Metallic

Specifications vary according to country. Please consult your local dealer for details.

Specifications may vary in some cases and are subject to change without notice.

Major Equipment

Honda Civic 2019 Features	LXI	VTI
Exterior		
Sunroof	--	o
Halogen Headlight	o	--
LED Headlight	--	o
LED Daytime Running Lights	o	o
Halogen Foglight	--	o
LED Side Turn Signal on Door Mirror	o	o
Wing Trunk Spoiler with High Mount Stop Light	--	o
Body-Colored Power Door Mirror	o	--
Body-Colored Power Door Mirror with Chrome Accent	--	o
Chrome Grille	o	o
Door Sash Garnish	Material	
Body-Colored Outer Handle	o	--
Chrome-Painted Outer Handle	--	o
Glass Antenna	o	o
16" Alloy Wheel	o	--
17" Alloy Wheel	--	o
Interior		
Honda LaneWatch™	--	o
Auto Aircondition	o	--
Dual Auto Aircondition	--	o
Wide View Rear Camera	--	o
3 Spoke Urethan Steering Wheel	o	--
3 Spoke Leather Steering Wheel	--	o
Piano Black Console Garnish	--	o
Black Console Garnish	o	--
60:40 Fold Down Rear Seats	o	o
Rear Seat Armrest with Cupholder	o	o
Rear Ventilation Ducts	o	o
Survivor Extention Mechanism	o	o
Map Light	o	o
Blue Ambient Light	--	o
Audio		
5 inch Screen Audio	o	--
7 inch Touch-Screen Display Audio	--	o
Voice Recognition	--	o
4 Speakers	o	--
4 Speakers+Tweeter	--	o
HDMI Jack	--	o
USB Jack - 1 Port	o	--
USB Jack - 2 Port	--	o
Hands Free Telephone	o	o
Bluetooth Audio	o	o
Convenience		
Remote Control Engine Starter	o	o
Smart Entry	o	o
Push Button Start	o	o
Walk Away Locking	--	o
Electric Parking Brake	o	o
Automatic Brake Hold	o	o
Day/Night Rear View Mirror	o	o
Rear Parking Sensors	o	o
Control		
Cruise Control	o	o
Electric Power Steering (EPS)	o	o
ECON Mode	o	o
Safety		
Antilock Brake System (ABS) with Electric Brake Force Distribution (EBD)	o	o
Vehicle Stability Assist (VSA) with Traction Control System (TCS)	o	o
Hill Start Assist	o	o
Dual SRS Driver & Assistant Airbag	o	o
Side & Side Curtain Airbag	--	o
Emergency Stop Signal	o	o
Brake Over Ride System	o	o
ECU Immobilizer	o	o
ISO-FIX	o	o